



SEND Parent/Carer Involvement Policy - Summary

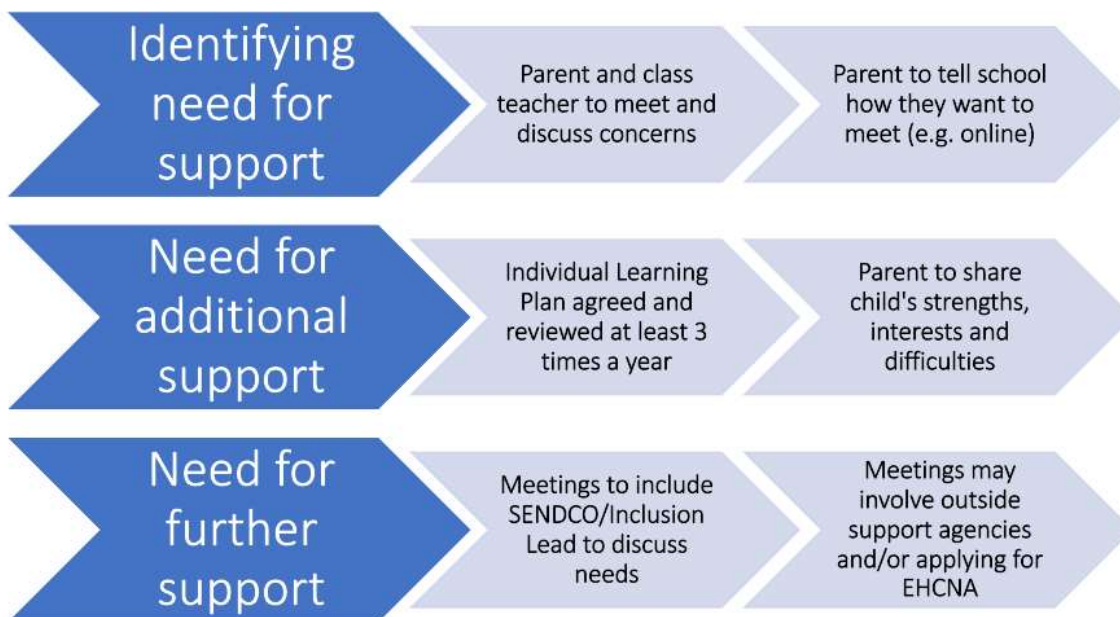
April 2023

Here at Holy Trinity CE(A) Primary School, we value parent involvement and strive for mutual support between our staff and the parent carers of all of our children, including those with Special Educational Needs and/or Disabilities (SEND).

We aim to:

- Provide parent carers with a wide range of opportunities to have a genuine say and play an active part in the planning of supportive provision for their child/young person.
- Offer parent carers the opportunity to attend meetings related to their child, such as planning and reviewing Individual Learning Plans.
- Ensure that our SEND children and young people feel emotionally and socially confident to share their strengths and to seek help if they feel they need it.

Involving parent carers of SEND children: a graduated approach



We recognise that:

- Parent carers and families are the most important influence on children and young people's lives.
- By actively listening to parent carers, school staff can learn valuable information from their expertise and knowledge including the strengths and interests of these children and young people, and strategies that work for them.
- Parent carers are as individual as their children and may have varying levels of involvement over time.
- Parent carers will have preferred ways of communicating with, our school (e.g. emails, letters, virtual meetings or in person meetings). Please let us know your preferred method.
- Parent carers may also need support e.g. with filling in forms or using School Apps e.g. Parent Pay or Class List. You can email office@htprimary.co.uk stating what you need help with and a member of staff will reply.

For the more detailed version of this policy, including a glossary of terms, please see our school website. http://www.holytrinity-cuckfield.w-sussex.sch.uk/web/special_educational_needs_and_disabilities_send/55549

Both versions of this involvement policy have been developed with a group of parent carers.